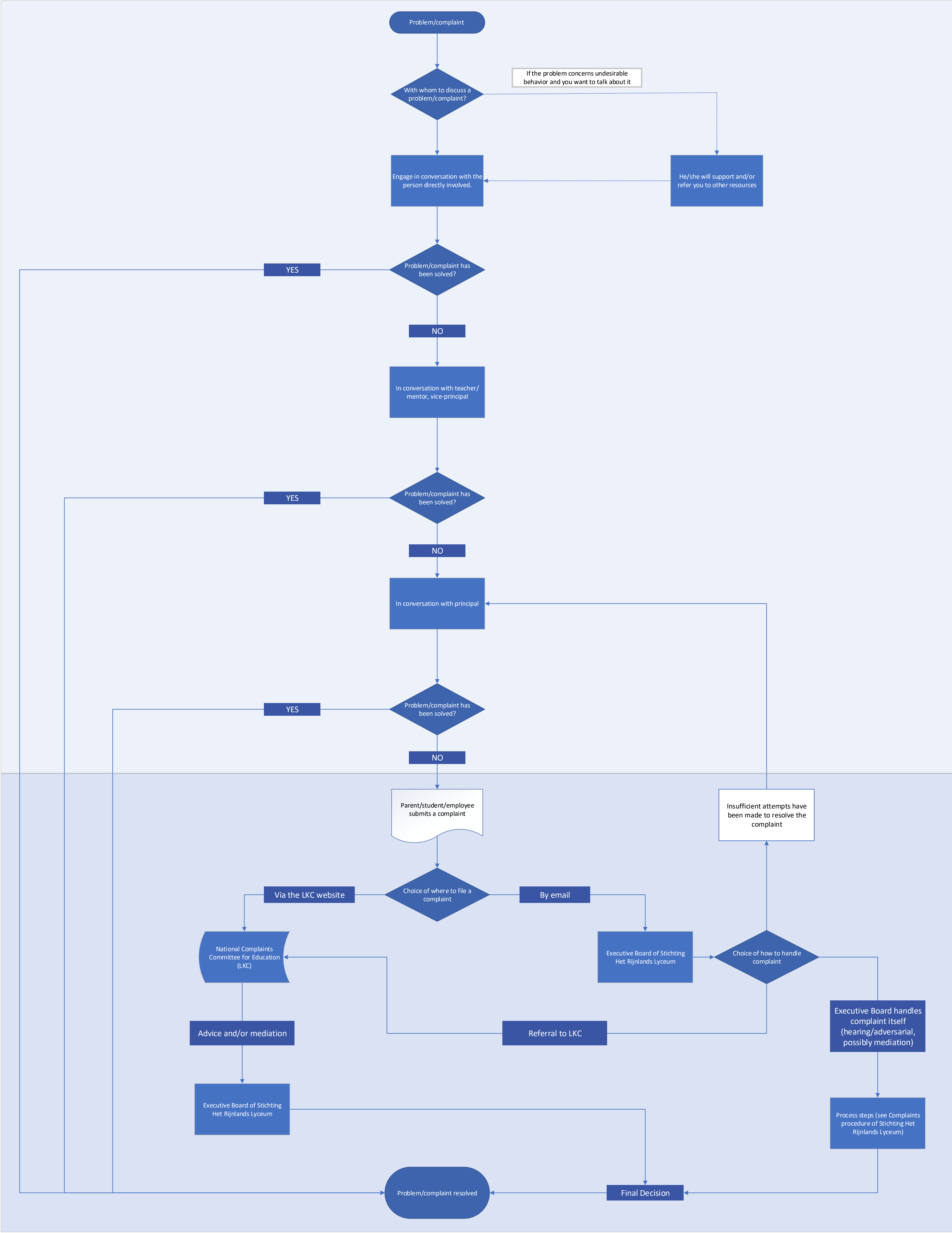


Complaints procedure flowchart Stichting Het Rijnlands Lyceum

What steps should be taken if there is a problem/a complaint within the school?

School

Central Services Office



No rights can be derived from this overview. For the complete procedure, see Complaints procedure Stichting Het Rijnlands Lyceum on the website Stichting Het Rijnlands Lyceum.